

**Link-Belt**  
EXCAVATORS • FORESTRY  
DEMOLITION • MATERIAL HANDLING

# 250<sup>Long Front</sup>X<sub>3</sub>

## SPECIFICATIONS

SAE Net Horsepower: 177 HP (132 kW)  
Operating Weight: 61,950 lbs. (28 100 kg)  
Digging Depth: 47 ft. 9 in. (14.56 m)



## Cab

The Link-Belt X3 cab is the strongest and roomiest LBX has ever offered. The X3 cab is ROPS and FOPS Level 1 certified and is designed to be strong and safe without sacrificing operator comfort. There is plenty of room to rest work boots on the two foot rests on either side of the travel pedals and still have enough space for the straight line travel pedal (standard on 250X3 and larger).

### Roomy

- 5% larger than X2 series cab
- 7% more floor space

### Strong

- ROPS and FOPS Level 1 certified

### Comfortable

- Fully-adjustable KAB seat, forward/backward, up/down
- Control consoles adjust independently of seat
- Adjustable arm rest angles, lumbar support, suspension

### Optimum Visibility

- Sunroof with sunshade rated FOPS level 1
- Additional mirrors
- Standard rearview camera
- Wiper blade stores off front glass

### Ergonomic Joysticks

- Low-effort
- Pre-wired for auxiliary hydraulics
- Function buttons for wiper swipe, horn, radio mute and one-touch idle
- Large, easy-to-push triggers

### Quiet

- Pressurized cab
- 8% stronger climate control system with 8 vents
- Auxiliary sound jack to enjoy music or podcasts

### Organized

- Logically located switches and controls
- Accessible 12V outlet for cell phone charging
- Cup holder
- Handy phone storage areas
- Removable ashtray; empty space can be used as an additional cup holder



## High-Definition 7" LED Monitor

The Link-Belt X3's from LBX are equipped with an all new High-Definition LED monitor. The full-color 7-inch monitor is one of the largest in the industry and rivals the resolution and quality found in luxury automobiles.

The X3's user-friendly monitor panel includes an engine-idle shutdown option that safely shuts off the engine after 3 minutes of idling, conserving fuel. Another idle feature accessible from the monitor panel is the auto-idle feature that, when selected, takes the engine speed down to an idle level, conserving fuel while waiting for that next truck to show up.



The X3's use a "passive" regeneration process and the monitor clearly lets the operator know what is going on and if they need to do anything with the machine. The on-screen DPD gauge shows the level of particulate matter that the DPF is capturing and will clean it out every 8 hours by way of an Auto Regeneration. During the Auto Regeneration process, the operator does NOT have to do anything with the machine other than keep working. During a parked, or Manual Regeneration, the monitor will give the operator the appropriate instructions on what to do with the machine, making it as simple as possible.

### In-Cab Control

- Select and set up attachments
- Track or monitor up to 13 service interval reminders
- Engine idle shutdown, which, when selected, safely shuts off the engine after 3 minutes of idling to conserve fuel
- Adjust hydraulic flow
- Option to adjust and set auxiliary hydraulic flows and pressures (210, 250, 300, 350 models only)
- 18 languages available

### Monitor

- Fuel consumption gauge
- Full color display of standard rear view camera AND optional side-view camera on the same screen
- Monitor engine coolant and hydraulic oil temperatures
- Displays fuel level, travel mode, work mode and attachment mode
- System/Machine warning messages
- Work tool settings



A standard rear-view camera displays a panoramic view of the worksite from the rear of the machine, an optional side-view camera is available.



From the Computer Menu, you can change the monitor language, program service reminders and change auxiliary settings for flow and pressure to name a few.

## Engine



### Improvements over X2 engines:

- Up to 10% more fuel efficient
- Up to 8% faster
- Up to 7% more lift capacity

The fuel-efficient, powerful, productive, quiet and long-lasting Isuzu engine LBX uses in the Link-Belt X3 series meets the EPA's Interim Tier 4 (Tier 4a) requirements by way of cooled exhaust gas recirculation (EGR) technology and a diesel particulate diffuser system (DPD). The DPD consists of a diesel oxidation catalyst (DOC) and a diesel particulate filter (DPF) for "passive regeneration" of exhaust emissions. This is the cleanest running and most fuel efficient engine used in a Link-Belt excavator to date.

A new variable geometry turbocharger (VGT) helps optimize the combustion process and ensures consistent boost pressure during low engine rpm's. This maintains efficient machine performance and helps eliminate harmful nitrous oxides (NOx) from forming.

The X3 has three engine work modes to give the operator full control of the machine for the job at hand:



- **Speed Priority (SP mode)** is the fastest and most productive mode giving the operator peak machine performance to get the job done quickly.
- **Heavy (H mode)** is a perfect combination of fuel efficiency and productivity. It really is the best of both worlds!
- **Applied Power (A mode)** gives the operator 13 different engine rpm settings to choose from to easily fine tune the machine to the specific job at hand. This mode is perfect for heavy lifting, fine grading or leveling work, and pipeline contractors use it to safely set pipe down into the trench.



### Intelligent Design

- Quiet
- Long-lasting
- One-touch idle and auto idle functions conserve fuel
- Idle start protects a cold engine from over-revving
- Auto engine warm up feature gradually increases engine speed until normal operating temperature is achieved

## Hydraulics

The Link-Belt X3's from LBX are equipped with two Kawasaki variable-displacement axial-piston pumps and one Kawasaki gear pump installed in-line with the engine. This is the most efficient hydraulic pump layout – keeping engine rpm's low while producing plenty of hydraulic muscle.

The X3 uses an open center hydraulic system which refers to the open passage in the control valve that allows the hydraulic oil to return to tank when the control valve is centered. This design gives the machine a much smoother feeling when operating and also eliminates excess pressure throughout the system, which, in turn, helps to conserve fuel.

### Powerful & Productive

- Auto Power Boost gives 9% more hydraulic pressure (power) for 8 seconds
- More speed through larger hydraulic lines
- Improved oil regeneration circuits

### Safe

- Boom and arm holding valves
- Standard hydraulic control pattern change valve to move between ISO and SAE
- Standard straight-line travel on 250 class and larger
- Optional "Free Swing" auto-centers the machine over the load and takes out the pendulum effect of large, long loads

### Long-lasting

- Continuous filtration of 5000-hour hydraulic oil through a 6 micron, full-flow return filter
- Less wear due to reduced back pressure



## Serviceability

### Easy to maintain

- Ground level access to:
  - ✓ Batteries
  - ✓ Dual fuel filters with water separators
  - ✓ Engine oil filter
  - ✓ Dual element air filter
  - ✓ Cab fresh air filter
- Green drain plug and hose
- Easy-open engine hood
- Easy-access in-cab fuse box accessible while seated in cab seat
- Side-by-side oil cooler/radiator design is easy to clean
- Quick and easy access to grease all attachment pivot points
- Grease cylinder track adjusters make adjusting track tension a breeze

### Maintenance reminders

- In-cab monitor will track 13 different serviceable items:
  - ✓ 5 reminders for engine items
  - ✓ 5 for hydraulic items
  - ✓ 3 other reminders

### Simple

- Flexible and heat-resistant color-coded wiring harnesses
- External fuel site gauge can be viewed from ground-level to see fuel levels
- Lube and maintenance charts posted inside toolbox for readability and protection from the elements

## Performance

### Improvements and Optimizations

- 7% increased lift capacity over X2 series
- 10% better fuel efficiency than X2 series
- 8% faster cycle times
- Time will be saved in switching out the attachment tools via the in-cab monitor



# Innovation at Work



## Durability

LBX built the Link-Belt X3 series to last, and they come with one of the best standard warranties in the industry. We back our machines with a 1-year / 1,800 hour full machine warranty, a 2-year / 3,000 hour engine warranty, and a 3-year / 10,000 hour XtraStructure warranty that even covers the turntable bearing and tub.



EMS (Extended Maintenance System) chrome pins and grease impregnated brass bushings with graphite inserts reduce wear-and-tear and can be found throughout the attachment. This design makes it possible to extend lube intervals to 6 months or 1,000 hours at all pivot points excluding the bucket which is monthly or 250 hours, whichever comes first.

### Strong

- All booms and arms are ultrasound tested at the factory
- X-Pattern carbody made with high tensile strength steel
- Turntable bearing tub extends through the carbody and is welded on top and bottom
- Factory standard belly pan guard
- D-channel sideframes provide excellent impact resistance
- Cab is FOPS level 1 and ROPS certified
- Thicker steel plating on the attachment
- Standard HD linkage on 350 X3 and 470 X3 and on all Link-Belt X3 excavators ordered with factory hydraulic packages



*X-Pattern carbody*



*Turntable bearing tub*

### Options

- Pre-existing mounting bosses make adding additional guarding easy
- Rubber bumper guarding
- Catwalks



*D-channel sideframes*





# Specifications

## Engine

Isuzu AL-4HK1X Tier 4A turbocharged diesel engine with electronic control (ECM) and high pressure common-rail fuel injection, 4-cylinder, Water-cooled, Cooled Exhaust Gas Recirculation (CEGR), Intercooler, Variable-Geometry Turbocharger (VGT), Diesel Particulate Diffuser (DPD) with Diesel Oxidation Catalyst (DOC) and Diesel Particulate Filter (DPF) for "passive regeneration" of exhaust emissions, Electronic fuel pump and priming, Fuel cooler, Auto-idle start, Auto warm-up, EPF engine protection, Dual-stage fuel filtration, In-cab fuel filter restriction indicator, Remote oil filter, Green plug oil drain, Double element air filter.

SAE net horsepower... 177 hp (132 kW) @ 2,000 rpm  
 Displacement..... 317 cu in (5.2 L)  
 Maximum Torque ... 458 lb-ft (621 Nm) @ 1800 rpm  
 Starter ..... 24V-5.0kW  
 Alternator..... 50 amp  
 Battery..... (2) 12-volt 92 amp hours

## Cab and Controls

ROPS certified cab with climate control A/C and heat with defroster, Control panel with LED Hi-Definition color monitor, Rearview camera display, Fuel-efficiency gauge, DPF regeneration gauge, Low-effort joysticks pre-wired for auxiliary hydraulics, Control pattern changer, Safety glass windows, Sunroof with sunshade, Shockless cab suspension with four fluid mountings, KAB® reclining suspension seat, Sliding 4-position tilting control consoles, AM/FM sound system with MP3 auxiliary input jack, Digital clock, Dome light, Seat belt, Coat hook, Cup holder, Storage compartments, Floor mat, Footrests, Ashtray, 24-volt cigarette lighter, 12-volt outlet, Travel alarm, Handrails, Mirrors, Side-entry cab filter, Spare parts kit.

Four selectable working modes, Anti-theft password protection system, On-board self-diagnostic system with memory and service interval reminders, Auto-idling system, One-touch decelerator, Auto-idle engine shutdown, Auto-power boost, Neutral safety start, Gate-lock safety shutoff.

A/C Rating ..... 20,080 BTU/h  
 Heater Rating ..... 21,030 BTU/h  
 Sound Level - Cab Interior..... 70.0 dB(A)  
 Sound Level - Exterior..... 102.0 dB(A)

## Hydraulic System

Open-center system, Two variable-displacement axial-piston pumps and one gear pump for pilot controls, Main control valve with one 4-spool section and one 5-spool section with auxiliary spool: stackable, Auxiliary Control System, Oil cooler, Auto-power boost, Boom and arm holding valves, 6 micron return filter, Firewall.

### Hydraulic Pumps

Pump Output ..... 2 x 61.8 gpm (234 L/min)  
 Pilot Pump Maximum Flow ... 5.3 gpm (20 L/min)

### Relief Valve Settings

Boom Up / Arm Out.... 4,970 psi (34.3 MPa)  
 in Power Boost ..... 5,340 psi (36.8 MPa)  
 Arm In ..... 3,060 psi (21.1 MPa)  
 Boom Down / Bucket... 4,260 psi (29.4 MPa)  
 Swing Circuit..... 3,920 psi (27.0 MPa)  
 Travel Circuit ..... 4,970 psi (34.3 MPa)

### Hydraulic Cylinders

number of cylinders - bore x rod x stroke  
 Boom ..... 2 - 5.1" x 3.5" x 52.6"  
 (130 mm x 90 mm x 1,335 mm)  
 Arm ..... 1 - 5.9" x 4.1" x 68.4"  
 (150 mm x 105 mm x 1,737 mm)  
 Bucket ..... 3.7" x 2.6" x 34.7"  
 (95 mm x 65 mm x 881 mm)

## Swing

Planetary reduction powered by axial-piston motor, Internal ring gear with grease cavity for swing pinion, Swing bearing is single-row, shear type ball bearing, Mechanical disc swing brake, Auto-power swing.

Swing Speed..... 10.6 rpm  
 Tail Swing ..... 9' 8" (2.95 m)  
 Swing Torque ..... 51,482 lb-ft (69.8 kNm)

## Undercarriage

X Pattern carbody with 15' 3" (4.65 m) LC long undercarriage by 8' 6" (2.59 m) track gauge, Sealed and strutted track chain with track guide, Sealed rollers and idlers, Two-speed independent hydrostatic travel with compact planetary final drive, Disc type brakes, Adjustable track tension, Carbody belly pan.

Carrier Rollers ..... 2 per Side  
 Track Rollers ..... 9 per Side  
 Track Link Pitch ..... 7.48" (190 mm)  
 Shoes ..... 51 per Side  
 Shoe Width..... 31.5" (800 mm)  
 Ground Pressure ..... 6.09 psi (0.042 MPa)

## Travel System

Two-speed independent hydrostatic travel with compact axial-piston motors, Hydraulic motor powered output shaft coupled to a planetary reduction drive and track sprocket, All hydraulic components mounted within the width of side frame, Automatic downshift for high torque to overcome obstacles, Spring-applied hydraulic release parking brake built into each motor, Travel motors equipped with counterbalance valve to prevent over-speeding down an incline, Single-pedal straight line travel.

Travel Speeds... 2.2 - 3.4 mph (3.5 - 5.5 km/h)  
 Drawbar Pull ..... 45,187 lbf (201 kN)  
 Gradeability..... 70% (35°)

## Attachment

Boom ..... 33' 10" (10.30 m)

### Available Arms

### Digging Force

• 26' 3" (8.00 m) ..... 9,060 lbf (40 kN)  
 with Auto Power Boost... 9,710 lbf (43 kN)  
 Bucket Digging Force..... 17,310 lbf (77 kN)  
 with Auto Power Boost.. 18,570 lbf (83 kN)

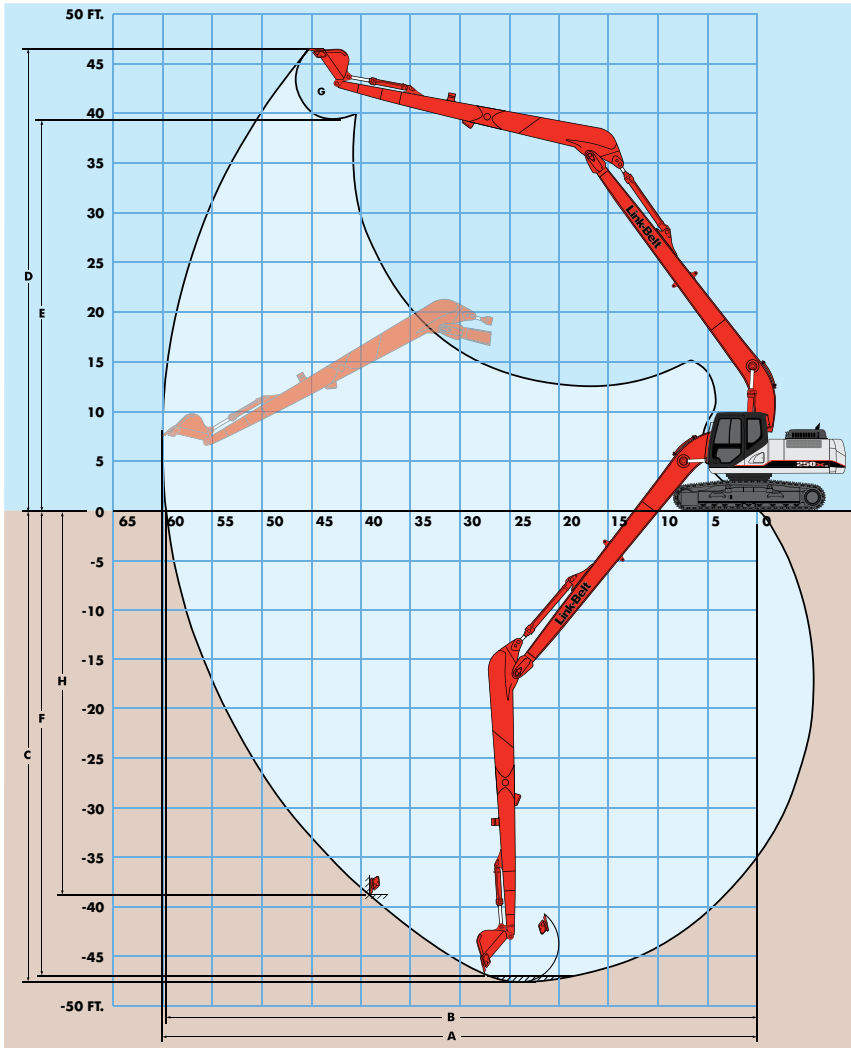
## Lubricant and Coolant Capacity

Fuel Tank..... 108.3 Gallons (410.0 Liters)  
 Hydraulic System ... 66.0 Gallons (250.0 Liters)  
 Hydraulic Tank..... 38.8 Gallons (147.0 Liters)  
 Final Drive (per side)... 1.3 Gallons (5.0 Liters)  
 Swing Drive ..... 2.6 Gallons (9.7 Liters)  
 Engine Oil..... 7.8 Gallons (29.6 Liters)  
 Coolant System..... 8.0 Gallons (30.2 Liters)

## Operating Weight

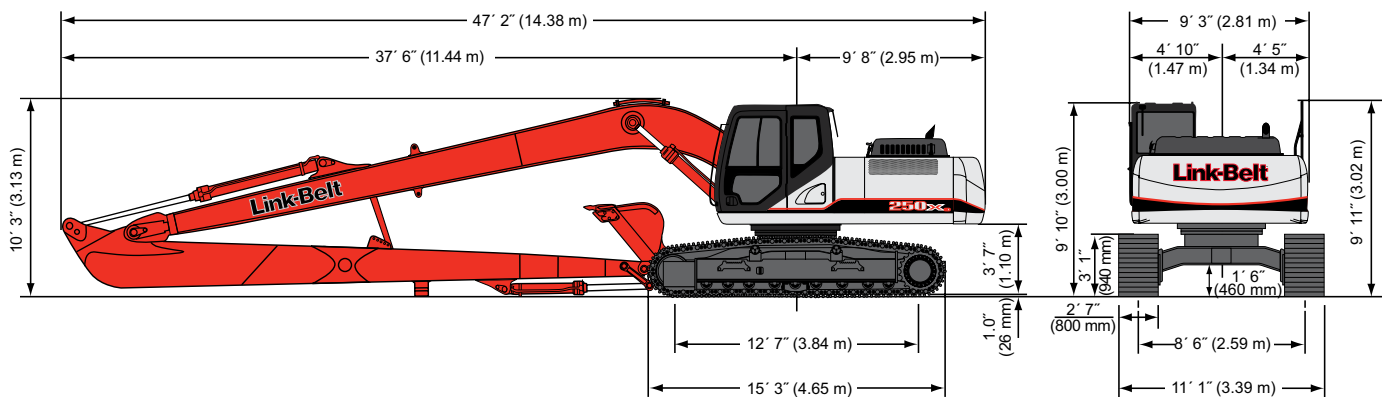
Working weight with 31.5" (800 mm) shoes, 33' 10" (10.30 m) boom, 26' 3" (8.0 m) arm, 750 lb. (340 kg) bucket, 16,535 lbs. (7 500 kg.) counterweight..... 61,950 lbs. (28 100 kg)

## Working Range



Machine Equipped with 33' 10" (10.30 m) Boom	Arm 26' 3" (8.00 m)
A. Maximum reach	60' 1" (18.32 m)
B. Maximum reach @ ground level	59' 9" (18.22 m)
C. Maximum dig depth	47' 9" (14.56 m)
D. Maximum dig height	45' 9" (13.95 m)
E. Maximum dump height	38' 8" (11.78 m)
F. Digging depth 8' (2.44 m) level bottom	47' 3" (14.41 m)
G. Bucket rotation	178°
H. Maximum vertical wall depth	39' 10" (12.13 m)

## Travel Dimensions



## Notes: Excavator lifting capacities

- Lifting capacities shown should not be exceeded. Weight of all lifting accessories must be deducted from the above lifting capacities.
- Lifting capacities are based on machine standing on firm, uniform supporting surface. User must make allowances for job conditions such as soft or uneven ground.
- Lifting capacities shown do not exceed 75% of minimum tipping loads or 87% of hydraulic capacities. **Capacities marked with an asterisk (\*) are limited by hydraulic capacities.**
- Least stable position is over the side.
- Operator should be fully acquainted with the Operator's Manual & Operating Safety Booklet, furnished by LBX before operating the machine.
- Capacities apply only to the machine as originally manufactured and normally equipped by LBX Company, LLC.
- Lift capacity ratings are based on ISO 10567, "Earthmoving Machinery - Hydraulic Excavators - Lift Capacity."

## Lifting Capacities - ISO Ratings

		Radius of Load													
		26' 3" (8.00 m) Arm with 33' 10" (10.30 m) Boom and 750 lb. (340 kg) Bucket with Power-Boost Applied													
		5' 0" (1.5 m)		10' 0" (3.0 m)		15' 0" (4.5 m)		20' 0" (6.0 m)		25' 0" (7.5 m)		30' 0" (9.0 m)		35' 0" (10.5 m)	
		End	Side	End	Side	End	Side	End	Side	End	Side	End	Side	End	Side
+10' 0" (3.0 m)	lbs			8,600*	8,600*	5,800*	5,800*	4,750*	4,750*	7,850*	7,850*	6,650*	6,650*	5,800*	5,800*
	kg			3,820*	3,820*	3,070*	3,070*	2,490*	2,490*	3,630*	3,630*	3,070*	3,070*	2,690*	2,690*
+5' 0" (1.5 m)	lbs			4,650*	4,650*	16,150*	16,150*	12,000*	12,000*	9,300*	9,300*	7,650*	7,650*	6,550*	6,250*
	kg			1,990*	1,990*	7,440*	7,440*	5,570*	5,570*	4,300*	4,300*	3,530*	3,530*	3,010*	2,900*
Ground	lbs	1,450*	1,450*	3,400*	3,400*	8,450*	8,450*	14,000*	12,850*	10,600*	9,500*	8,550*	7,300*	7,200*	5,750
Line	kg	660*	660*	1,500*	1,500*	3,680*	3,680*	6,490*	5,940	4,900*	4,400	3,950*	3,390	3,320*	2,670
-5' 0" (1.5 m)	lbs	2,650*	2,650*	4,000*	4,000*	7,250*	7,250*	14,550*	11,550	11,650*	8,600	9,350*	6,650	7,800*	5,300
	kg	1,190*	1,190*	1,770*	1,770*	3,180*	3,180*	6,300*	5,370	5,390*	3,990	4,310*	3,100	3,590*	2,460
-10' 0" (3.0 m)	lbs	3,750*	3,750*	4,900*	4,900*	7,500*	7,500*	12,750*	10,800	12,400*	8,000	9,950*	6,200	8,100*	4,900
	kg	1,670*	1,670*	2,190*	2,190*	3,320*	3,320*	5,570*	5,020	5,740*	3,710	4,590*	2,880	3,750	2,290
-15' 0" (4.5 m)	lbs	4,850*	4,850*	6,050*	6,050*	8,300*	8,300*	12,750*	10,450	12,700	7,600	9,750	5,850	7,800	4,650
	kg	2,170*	2,170*	2,690*	2,690*	3,670*	3,670*	5,590*	4,860	5,910*	3,540	4,540	2,730	3,630	2,170
-20' 0" (6.0 m)	lbs	6,000*	6,000*	7,200*	7,200*	9,400*	9,400*	13,600*	10,450	12,600	7,500	9,600	5,750	7,700	4,550
	kg	2,690*	2,690*	3,220*	3,220*	4,160*	4,160*	5,980*	4,840	5,840	3,490	4,470	2,670	3,570	2,120
-25' 0" (7.5 m)	lbs	7,250*	7,250*	8,450*	8,450*	10,800*	10,800*	15,150*	10,600	12,600	7,550	9,650	5,750	7,700	4,550
	kg	3,240*	3,240*	3,760*	3,760*	4,770*	4,770*	6,640*	4,910	5,860	3,510	4,470	2,670	3,570	2,120
-30' 0" (9.0 m)	lbs	8,650*	8,650*	10,150*	10,150*	12,750*	12,750*	15,800*	10,850	12,500*	7,750	9,750	5,900	7,800	4,700
	kg	3,840*	3,840*	4,490*	4,490*	5,620*	5,620*	7,320*	5,040	5,790*	3,590	4,520	2,740	3,610	2,170
-35' 0" (10.5 m)	lbs	10,150*	10,150*	12,200*	12,200*	15,400*	15,400*	14,700*	11,300	11,700*	8,100	9,550*	6,200	7,900	4,950
	kg	4,550*	4,550*	5,380*	5,380*	6,750*	6,750*	6,830*	5,230	5,450*	3,740	4,460*	2,850	3,670*	2,280
-40' 0" (12.0 m)	lbs			14,400*	14,400*	16,650*	16,650*	12,900*	11,950	10,300*	8,600	8,350*	6,650	6,700*	5,200
	kg			6,440*	6,440*	7,750*	7,750*	6,050*	5,510	4,850*	3,960	3,960*	3,050	3,210*	2,460
-45' 0" (13.5 m)	lbs							10,000*	10,000*	7,900*	7,900*				
	kg							4,830*	4,830*	3,850*	3,850*				

		Radius of Load									
		26' 3" (8.00 m) Arm with 33' 10" (10.30 m) Boom and 750 lb. (340 kg) Bucket with Power-Boost Applied									
		40' 0" (12 m)		45' 0" (13.5 m)		50' 0" (15 m)		55' 0" (16.5 m)		Cap. at Max. Reach	
		End	Side	End	Side	End	Side	End	Side	End	Side
+40' 0" (12.0 m)	lbs									2,800*	2,800*
	kg									1,270*	1,270*
+35' 0" (10.5 m)	lbs					3,500*	3,500*			2,750*	2,750*
	kg					1,600*	1,600*			1,240*	1,240*
+30' 0" (9.0 m)	lbs			3,600*	3,600*	3,650*	3,650*			2,700*	2,700*
	kg			1,640*	1,640*	1,670*	1,670*			1,230*	1,230*
+25' 0" (7.5 m)	lbs			3,750*	3,750*	3,750*	3,750*	3,500*	3,000	2,750*	2,750*
	kg			1,720*	1,720*	1,710*	1,710*	1,660*	1,430	1,240*	1,240*
+20' 0" (6.0 m)	lbs			4,000*	4,000*	3,900*	3,750	3,800*	2,900	2,800*	2,500
	kg			1,830*	1,830*	1,790*	1,760*	1,750*	1,380	1,270*	1,130
+15' 0" (4.5 m)	lbs	4,650*	4,650*	4,350*	4,350*	4,150*	3,550	4,000*	2,800	2,850*	2,300
	kg	2,140*	2,140*	1,990*	1,990*	1,890*	1,680	1,830*	1,320	1,300*	1,040
+10' 0" (3.0 m)	lbs	5,200*	5,200*	4,750*	4,250	4,400*	3,350	4,200*	2,650	3,000*	2,150
	kg	2,390*	2,390*	2,180*	1,990	2,020*	1,580	1,910*	1,250	1,360*	970
+5' 0" (1.5 m)	lbs	5,750*	4,950	5,150*	3,950	4,700*	3,150	4,300	2,500	3,150*	2,050
	kg	2,650*	2,310	2,370*	1,850	2,160*	1,480	2,000	1,180	1,440*	930
Ground	lbs	6,250*	4,550	5,550*	3,650	4,950	2,950	4,150	2,350	3,400*	2,000
Line	kg	2,880*	2,130	2,550*	1,720	2,290	1,390	1,940	1,120	1,530*	910
-5' 0" (1.5 m)	lbs	6,700*	4,250	5,700	3,450	4,750	2,800	4,000	2,250	3,650	2,000
	kg	3,090*	1,980	2,660	1,600	2,230	1,310	1,880	1,060	1,660	910
-10' 0" (3.0 m)	lbs	6,600	3,950	5,500	3,250	4,650	2,650	3,950	2,150	3,750	2,050
	kg	3,080	1,850	2,560	1,510	2,160	1,240	1,830	1,020	1,700	930
-15' 0" (4.5 m)	lbs	6,400	3,800	5,350	3,100	4,550	2,550			3,950	2,150
	kg	2,980	1,760	2,490	1,450	2,110	1,200			1,780	980
-20' 0" (6.0 m)	lbs	6,300	3,700	5,300	3,050	4,500	2,550			4,200	2,350
	kg	2,930	1,720	2,460	1,420	2,100	1,180			1,900	1,060
-25' 0" (7.5 m)	lbs	6,350	3,700	5,350	3,100					4,650	2,650
	kg	2,940	1,720	2,480	1,430					2,090	1,190
-30' 0" (9.0 m)	lbs	6,450	3,850	5,500	3,200					5,300	3,100
	kg	2,990	1,770	2,540	1,490					2,380	1,380
-35' 0" (10.5 m)	lbs	6,500*	4,100							6,200*	3,850
	kg	3,040*	1,890							2,780*	1,690
-40' 0" (12.0 m)	lbs									6,650*	5,100
	kg									2,980*	2,210
-45' 0" (13.5 m)	lbs									7,000*	7,000*
	kg									3,150*	3,150*

## Standard and Optional Equipment

<b>CAB</b>	Seat Recline .....	✓	<b>HYDRAULICS</b>	Hand Rail - RH Access .....	✓
12V Power Outlet .....	✓	Selectable Monitor Languages .....	✓	Lifting Eyes for Counterweight .....	✓
24V Lighter .....	✓	Side View Camera .....	●	Lockable Fuel Cap and Service Doors .....	✓
AM/FM Sound System .....	✓	Small Storage .....	✓	Rubber Bumper Guards .....	●
Anti-Theft Device .....	✓	Sun Visor .....	●	Tool Box - Lockable .....	✓
Ashtray .....	✓	Travel Alarm with Cancel Switch .....	✓	Turntable Tub .....	✓
Auxiliary Switches on Control Lever .....	✓	Trip Meter - Digital .....	✓	Work Lights - Boom and Tool Box .....	✓
Cab Exterior Light Harness .....	✓	Vandal Cover (front window) .....	●		
Cab Filter - External .....	✓	Wiper & Washer .....	✓	<b>ATTACHMENT</b>	
Cab Handrails .....	✓	Wiper Switch on RH Joystick .....	✓	26' 3" (8.00 m) Long Arm .....	●
Cab Interior Light .....	✓			33' 10" (10.30 m) Main Boom Section .....	●
Cab Lights .....	●	<b>ENGINE</b>		Auxiliary Pipe Brackets .....	✓
Cab Iso-Mounts .....	✓	Air Filter - Double Element .....	✓	Boom Work Light .....	✓
Clear Roof Window .....	✓	Air Filter Restriction Indicator .....	✓	Bucket Anti-Clatter Device .....	✓
Climate Control A/C and Heater .....	✓	Air Pre-Cleaner .....	●	Chrome pins .....	✓
Console Tilt .....	✓	Auto Warm-Up System .....	✓	Easy Maintenance System .....	✓
Cup Holder .....	✓	Auto-Idle .....	✓	HD Bucket Link .....	●
Defroster .....	✓	Auto-Idle Engine Shutdown .....	✓	Remote Lube Bank .....	✓
Digital Clock .....	✓	CEGR - Cooled Exhaust Gas .....	✓	Teardrop pin retention keepers .....	✓
ECO Gauge .....	✓	Recirculation .....	✓		
Emergency Exit and Hammer .....	✓	Cooling Fan .....	✓	<b>PARTS KIT</b>	
Face Vent .....	✓	Diesel Oxidation Catalyst (DOC) .....	✓	Bucket Anti-Clatter Device .....	✓
Floor Mat .....	✓	Diesel Particulate Filter (DPF) .....	✓	Engine Manual .....	✓
FOPS Head Guard (Level 2) .....	●	Drain for Fuel Tank .....	✓	Engine Oil Filter .....	✓
Front Guard (mesh) .....	●	Dual Remote Fuel Filters with .....	✓	Filter Wrench .....	✓
Front Guard (OPG 1,2) .....	●	Water Separation .....	✓	Fuel Filters .....	✓
Front Window One-Touch Lock .....	✓	EGR Coolers .....	✓	Grease Gun .....	✓
Gate Lock Hydraulic Activation .....	✓	Emergency Engine Stop .....	✓	Green Plug Drain Hose for Engine .....	✓
Horn .....	✓	Engine Idle System .....	✓	Oil Drain .....	✓
Hot & Cool Box .....	✓	Remote Engine Oil Drain .....	✓	Hydraulic Return Filter .....	✓
Hour Meter - Digital .....	✓	Engine Protection Feature .....	✓	Ignition Keys .....	✓
KAB 815 Suspension Seat .....	✓	External Fuel Gauge .....	✓	Pilot Circuit Hydraulic Filter .....	✓
KAB 855 Air-Suspension .....	●	Fan Housing .....	✓	Rearview Mirrors .....	✓
LED Color Monitor .....	✓	Fuel Filter Restriction Indicator .....	✓	Work Light for Boom .....	✓
Magazine Rack .....	✓	Fuel Management System .....	✓		
Maintenance Interval Reminders .....	✓	Fuel Shut-Off Valve .....	✓		
MP3 Auxiliary Input Jack .....	✓	Fuel Usage Monitor .....	✓		
On-Board Diagnostic System .....	✓	Glow Plug Pre-Heat .....	✓		
One-Piece Right Window .....	✓	Idle-Start .....	✓		
Radio Mute Switch .....	✓	Intercooler .....	✓		
Rain Deflector .....	✓	Neutral Start .....	✓		
Rear View Camera .....	✓	One-Touch Idle .....	✓		
Rear View Mirrors .....	✓	Passive Emissions-Regeneration .....	✓		
Roof Sun Shade .....	✓	Radiator / Oil Cooler Protective Screen .....	✓		
ROPS Certified .....	✓	Regeneration Gauge on Monitor .....	✓		
Safety Glass Windows .....	✓	Remote Oil Filter .....	✓		
		VGT Turbocharger .....	✓		
				<b>AUXILIARY HYDRAULIC OPTIONS</b>	
				Low-Flow Aux. with Switch Activation ...	●
				<b>UNDERCARRIAGE</b>	
				800 mm shoes (31.5 in) 3-Bar Steel .....	✓
				Steps .....	✓
				Carbody Belly Pan (swivel guard) .....	✓
				Center Track Guide (single) .....	✓
				Center Track Guide (triple) .....	●
				Long Undercarriage .....	✓
				Sealed Link Chain .....	✓
				Strutted Track Chain .....	✓
				X-Pattern Carbody .....	✓
				<b>UPPERSTRUCTURE</b>	
				Belly Pans .....	✓
				Center Cover (Over Main CV) .....	✓
				Fuel Tank Belly Pan .....	✓

**Equipment Key**  
Standard ✓ Optional ●

## Bucket Sizes

Bucket Type	SAE Heaped Capacity		Width Outside Lip		Bucket Weight		Number of Teeth	Arm Length 26' 3" 8.00 m
	(yd <sup>3</sup> )	(m <sup>3</sup> )	(in)	(mm)	(lbs)	(kg)		
STDP Standard duty plate	0.50	0.38	24	610	791	359	4	H
	0.66	0.50	30	762	889	403	4	H
	0.82	0.63	36	914	1007	457	5	L
	0.88	0.67	42	1067	1110	503	6	L
DITCH	0.77	0.59	54	1372	903	410	0	M
	0.86	0.66	60	1524	964	437	0	L
	0.95	0.73	60	1524	998	453	0	L

Approval Code For Arm/Bucket Combinations	
H .....	Heavy material (up to 3,370 lbs./yd <sup>3</sup> )
M .....	Medium material (up to 2,700 lbs./yd <sup>3</sup> )
L .....	Light material (up to 2,020 lbs./yd <sup>3</sup> )
N/A .....	Not applicable

STDP - Standard duty plate  
HDP - Heavy duty plate  
XDP - Extreme duty plate  
POWER - HDP for use with ESCO multi-pin grabber only